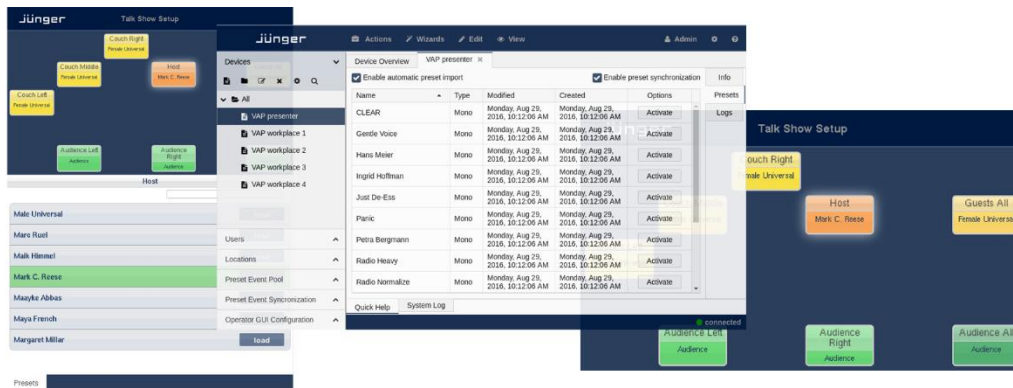


## J\*AS – Jünger Administration Surface

This service application enables centralized device monitoring, user management and preset synchronization accessible from anywhere within an IP network for all D\*AP4 – Voice Audio Processors.



### Overview

The Jünger Administration Surface makes presets accessible across the network and offers valuable metadata for system administration.

### Preset Sharing

J\*AS is built to work as a layer above Jünger Audio’s powerful preset and event management system. Personalized settings and profiles from any connected D\*AP4 VAP can be stored on the server and shared with other devices by the push of a button.

Centralized presets automatically appear in a remote section incorporated in the familiar D\*AP4 VAP mobile UI and can be activated instantly. It is further possible to load presets by user log-in, RFID or NFC tag authentication.

### Centralized Monitoring and Administration

J\*AS features a simple user interface for device configuration and administration. It facilitates system service staff’s daily work by displaying all devices at once in a well laid-out overview window. Technical statuses and metadata can be checked and verified at a glance. For trouble shooting, J\*AS receives and stores the system logs of all connected devices.

### Accessible, Redundant and Flexible

As a flexible multi-platform server application, J\*AS can run on virtually any computer. Ranging from a single laptop to multi device server installations for redundancy. Like all other current Jünger Audio products, J\*AS is operated via web interface using a standard web browser, anywhere within your network.

### Key Features

#### Global preset storage and sharing

- Presets can be saved and managed on a centralized server
- Every stored preset can be activated instantly on all connected D\*AP4 VAP devices
- Presets may be activated by user log-in or NFC card authentication

#### Accessibility, redundancy and multi-platform flexibility

- Operated via web interface from anywhere within the network
- Automatic fail-over mechanism when run on multiple machines
- Automatic database backup
- Compatible to MS Windows, Mac OS X, Linux and Unix

#### Centralized device monitoring

- Access to status and technical metadata of all connected devices
- Access to all device’s error logs

