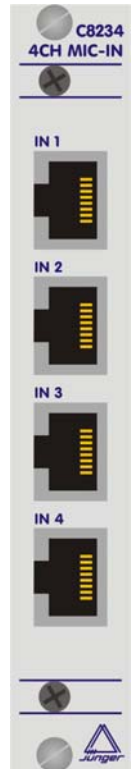


**4 MIC / Line inputs**

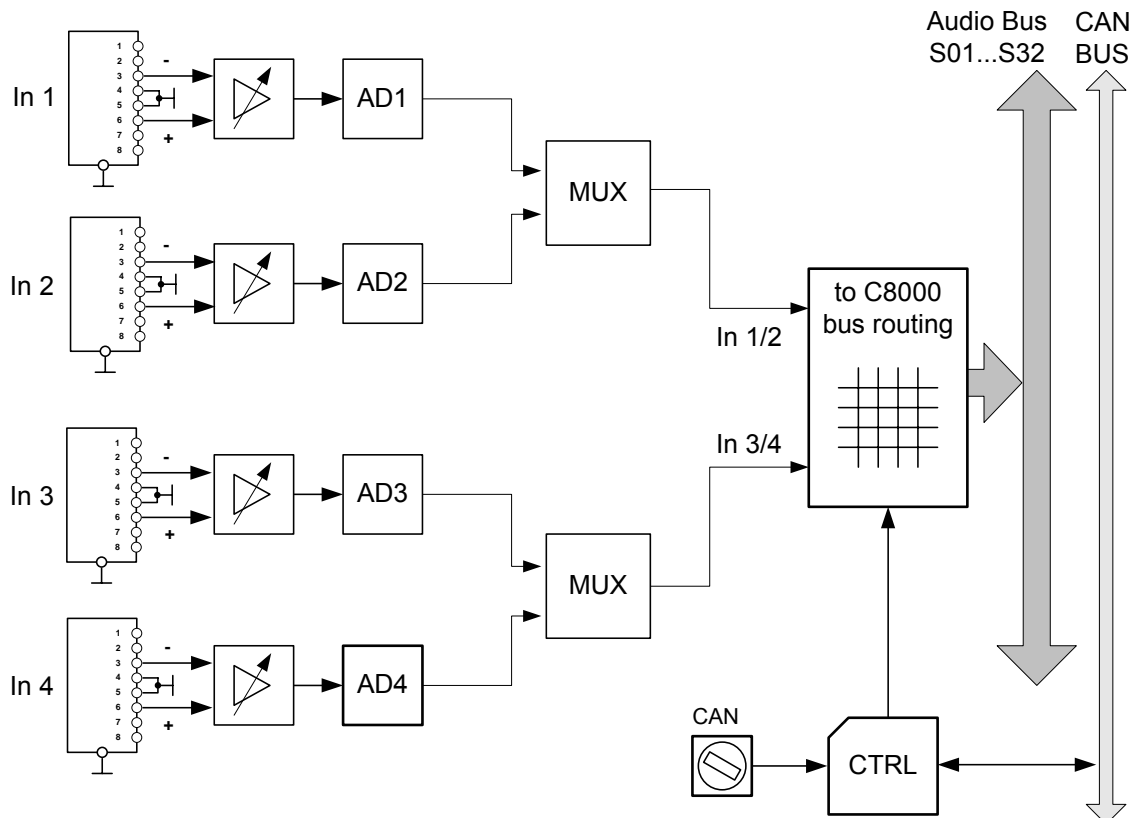
**C8234**

features

- 4 high quality MIC / Line inputs
- 24bit sigma-delta A/D-converter
- Sample rates up to 96kHz
- Digitally controlled gain 0..+65dB
- Max. line input level +20dBu
- Pad attenuation -10dB (Line)
- Floating balanced analog inputs
- Electrical isolation between channels
- 48V phantom power



block diagram



---

**4 MIC / Line inputs**

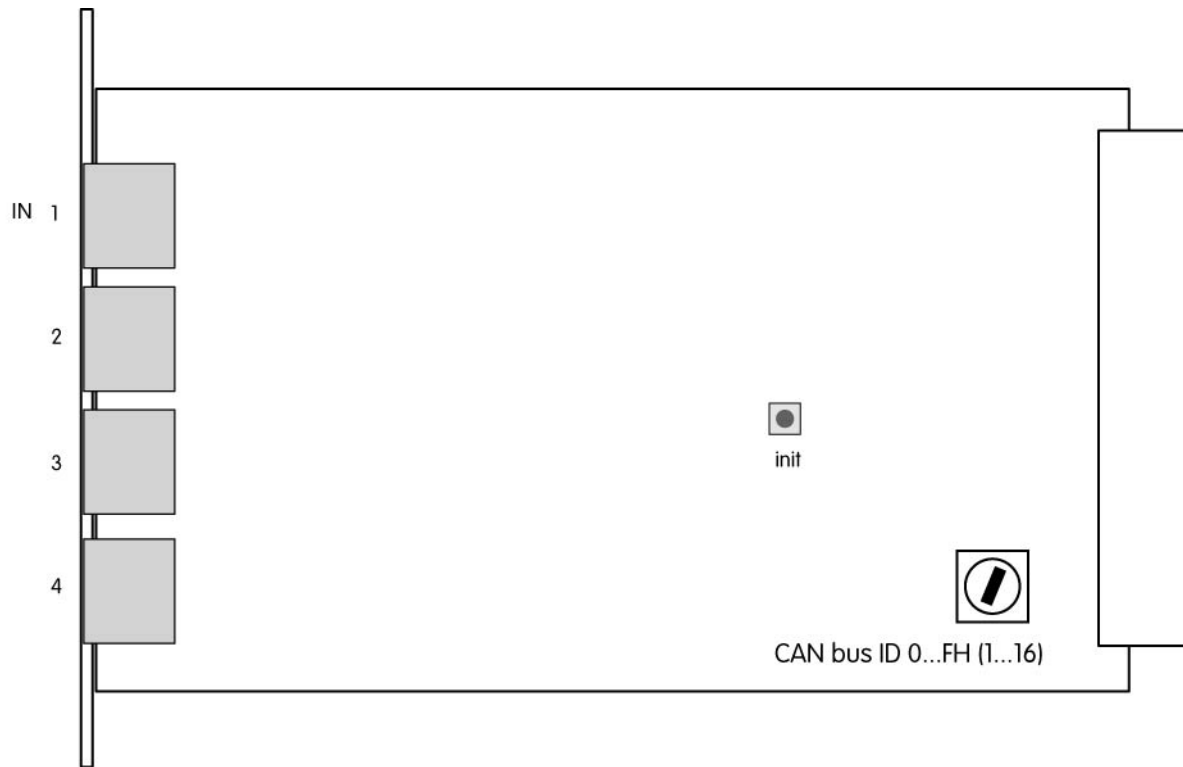
**C8234**

---

technical specifications

Dynamic range:	110 dB (RMS) digital FS
THD+N:	< 0.09% @ max. input level
Equivalent Input noise: Mic	126.5 dB (RMS) @ 200 Ohm, 40 dB gain
Max. input level:	+ 15 dBu (Mic) + 22 dBu (Line)
Frequency response:	10 Hz (-3 dB)...20 kHz (-0,5 dB) (SR=48kHz) 10 Hz (-3 dB)...40 kHz (-0,5 dB) (SR=96kHz)
Crosstalk:	> 90 dB (20kHz)
CMR:	> 80 dB (20kHz)
Input impedance: MIC Line	9k $\Omega$ , differential 20k $\Omega$ , differential
Gain:	0dB, +10dB to +65 dB in 1dB steps
Digital output: resolution sample rate	24bit 32...96 kHz
Input connector RJ-45	4,5 & shield = ground 3=live, 6=return
Back plane connector: ref. to DIN41612	64pin, a+b, male
Power supply consumption	+5V DC appr. 1300 mA
Dimensions	3 RU, 8 HP, 160 mm in depth

installation



Set the **CAN** rotary encoder to an address, which is not in use by an other module of a C8000 frame (for details regarding CAN addressing, see C8000 system manual).

Pressing the **INIT** button during power up will initialize the module parameters to factory default values.

fields of application

Live recording (music, TV, radio)

- multiple C8234s mounted in stage boxes (i.e. short distance from mics)
- multi channel signal transmission of analog signals via C8306 optical or C8305 BNC MADI interface

Multi channel budget audio production

- multiple C8234 may replace cheap converters of budget digital mixing desks
- configurable converter design (mic, analog line, AES inputs to MADI and AES, analog out from MADI)

Multichannel HD recording

- multiple C8234 in user specific configured converter boxes as break out devices for multi channel HD recording systems
- multi channel signal transmission by use of C8306 optical MADI interface

Budget analog inputs for any kind of C8000 system designs

- mic inputs
- analog line inputs

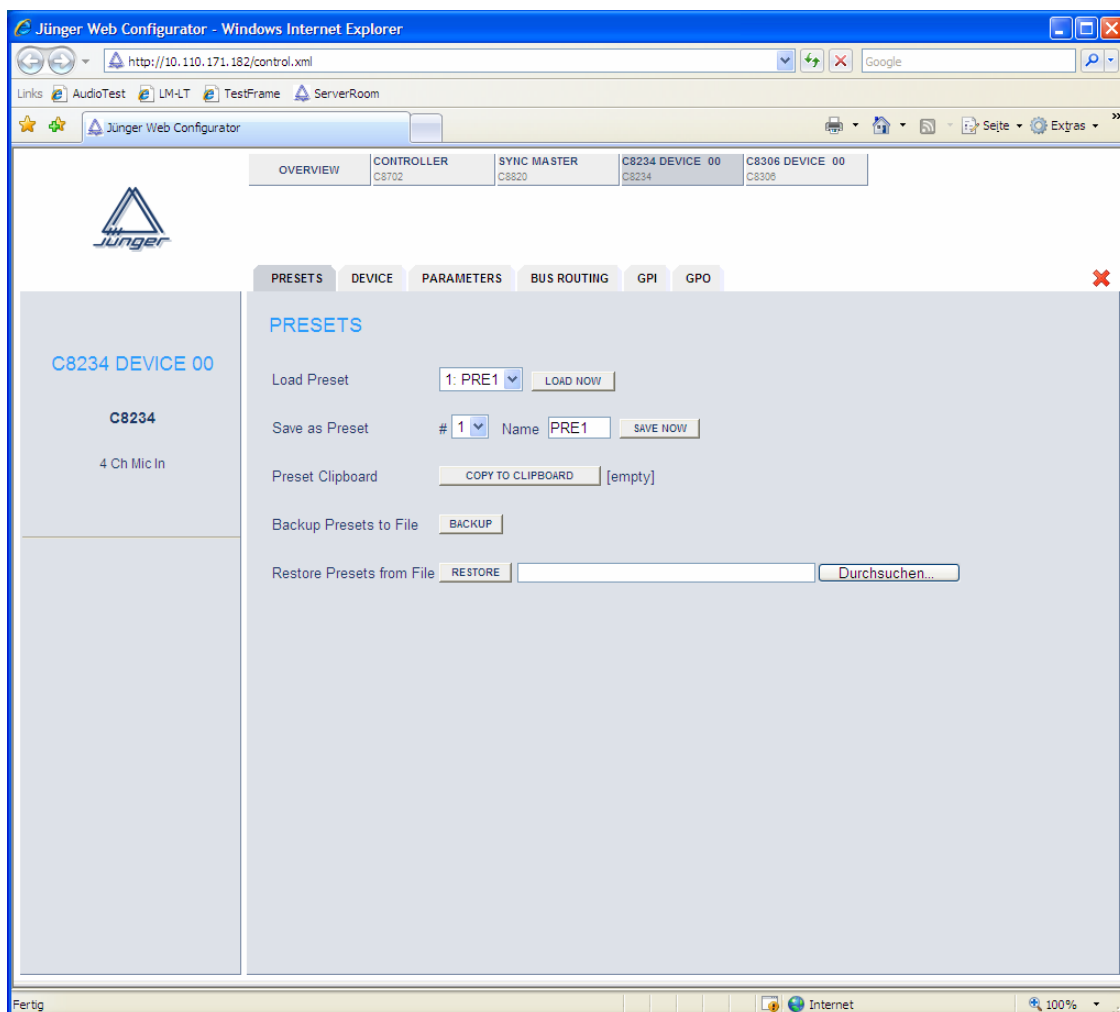
Remote operation via web interface (IE 7, FF 2.0)

- customer designed, dedicated controls (e.g. of mixing consoles) via Junger HTTP based API (documentation on request)

remote configuration via web interface

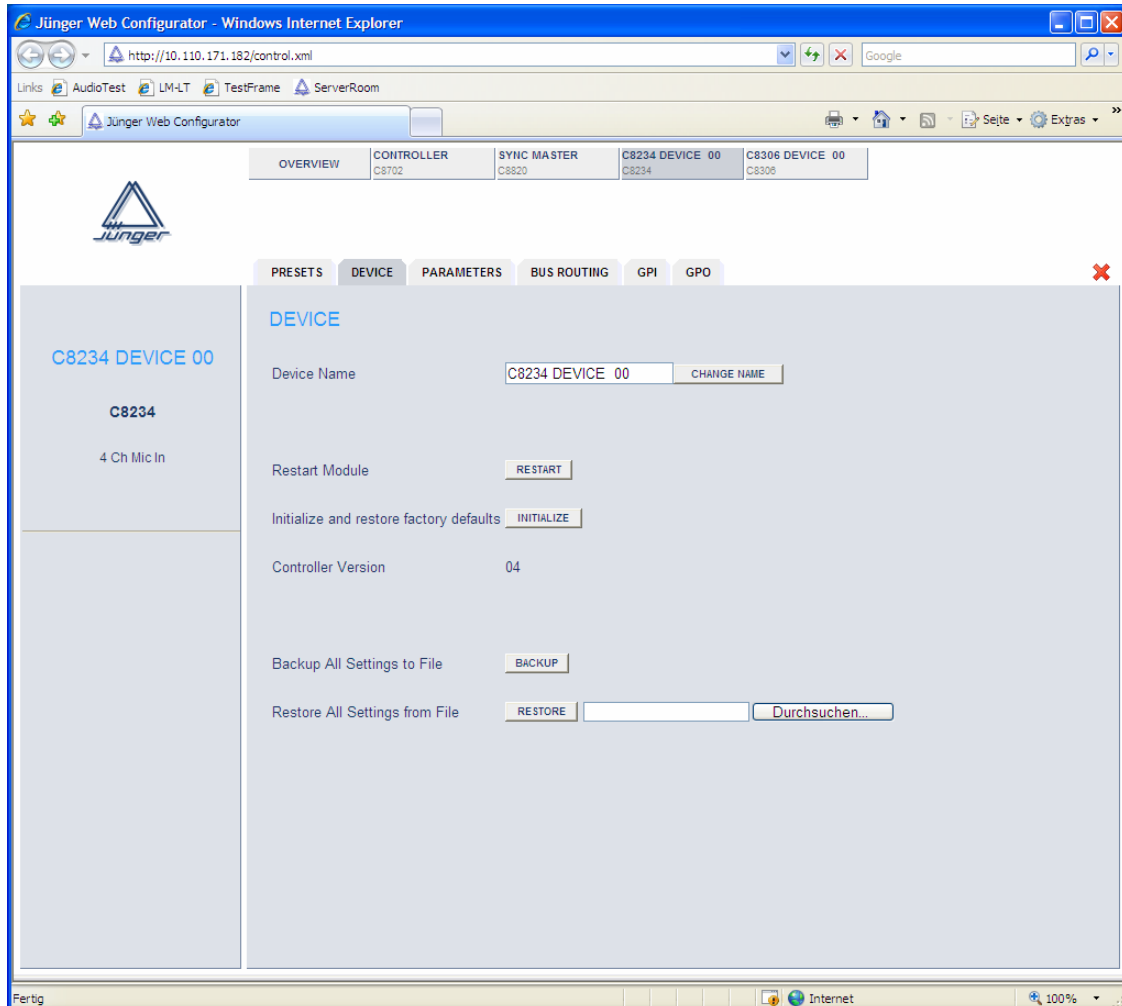
*Set up of all configurations, parameters and functions via web browser.  
See also C8702 frame controller manual and respective firmware release notes.  
Layout and functionality are related to firmware version 1.1.x of the C8702.*

**PRESET:** Each Preset includes the parameters of all 4 inputs.  
There are 8 User-Presets available. They can be changed manually or by GPI.



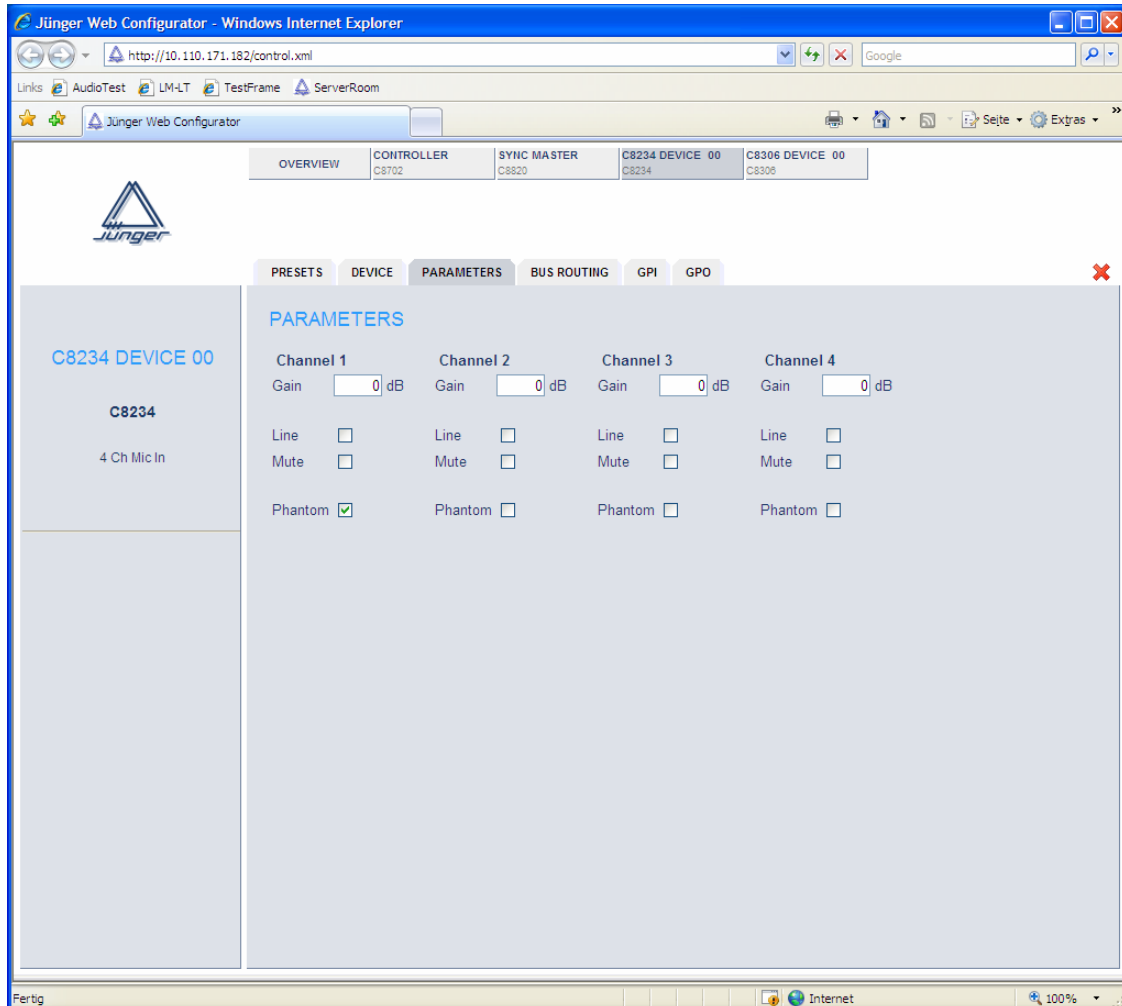
- Functions:
- Copy & Paste the active Preset via CLIPBOARD to other modules within a frame
  - Load, Save Presets (8 user presets)
  - Backup, Restore (all presets to / from file)

DEVICE: Display of device specific information



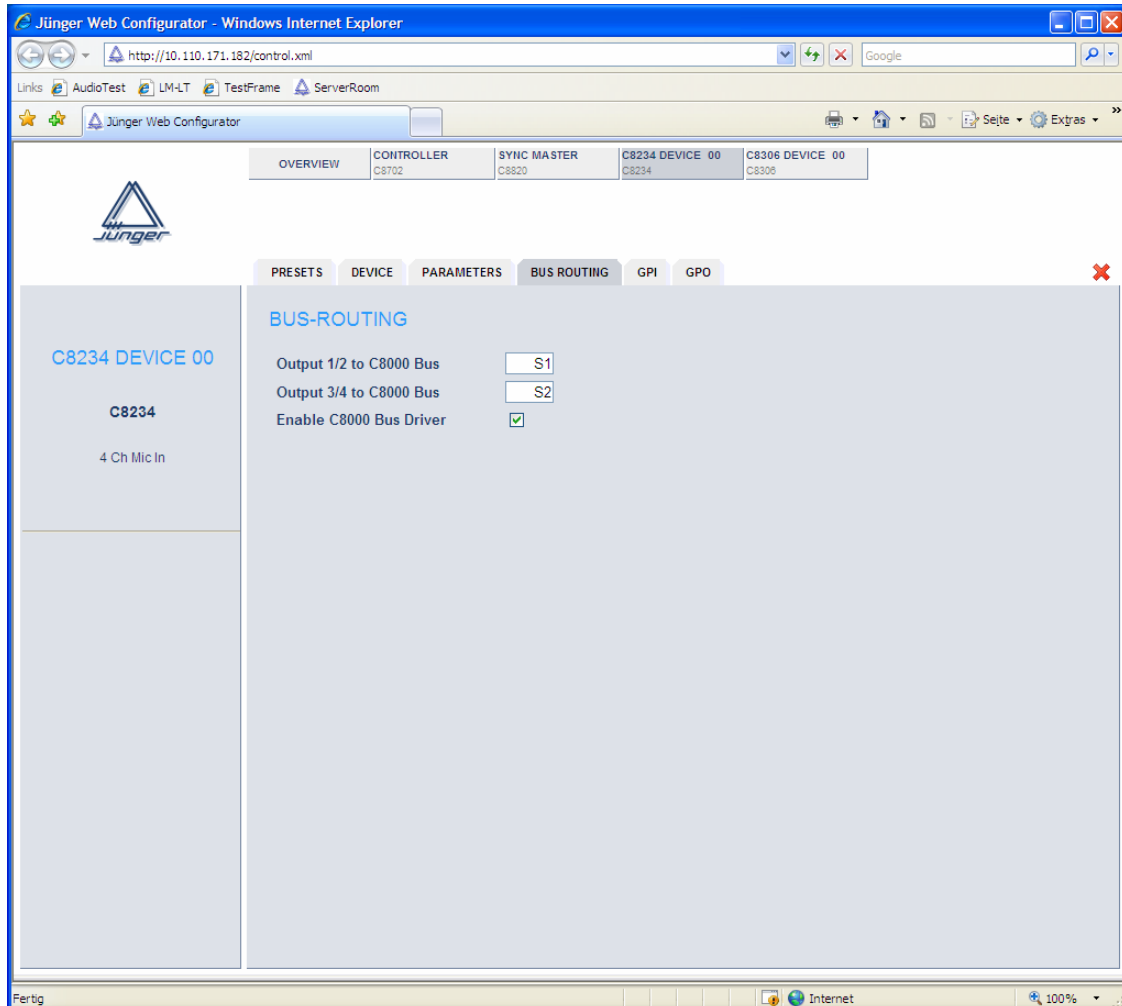
Functions: Set up of a device name  
Restart (warm start) or Initialize (to factory default!)  
Backup, Restore (all settings to / from file)  
Display of firmware version

PARAMETER: Set up of operating parameter



Function: Gain - setting from 0dB, 10dB to 65dB  
Line - will activate an input pad to attenuate the signal by 10 dB  
Mute – mutes the respective input  
Phantom Power – turns 48 V phantom power on

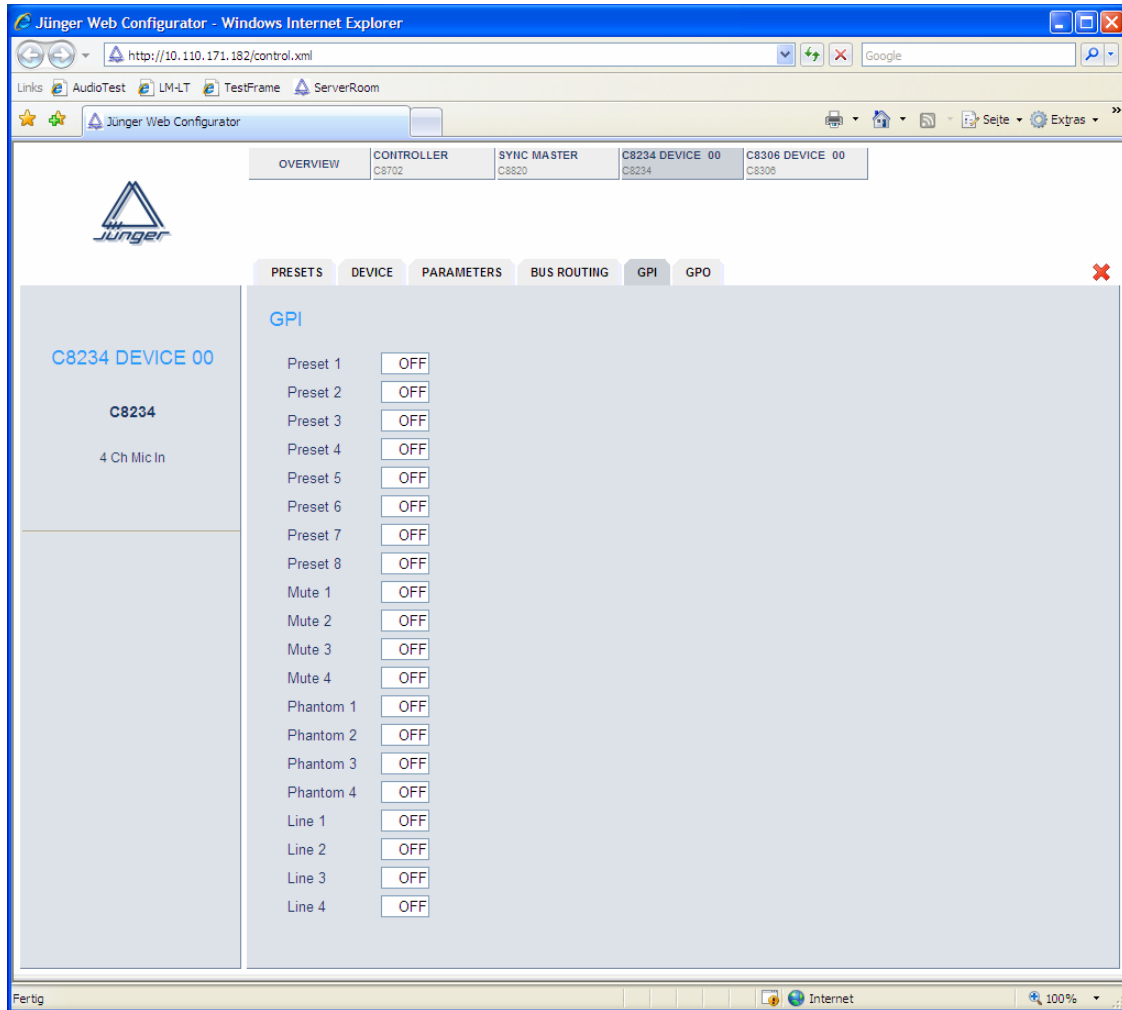
**BUS ROUTING:** Routing of inputs to the C8000 audio buses



Function: Routing of In 1/2 and In 3/4 as pairs  
Enable the C8000 bus driver

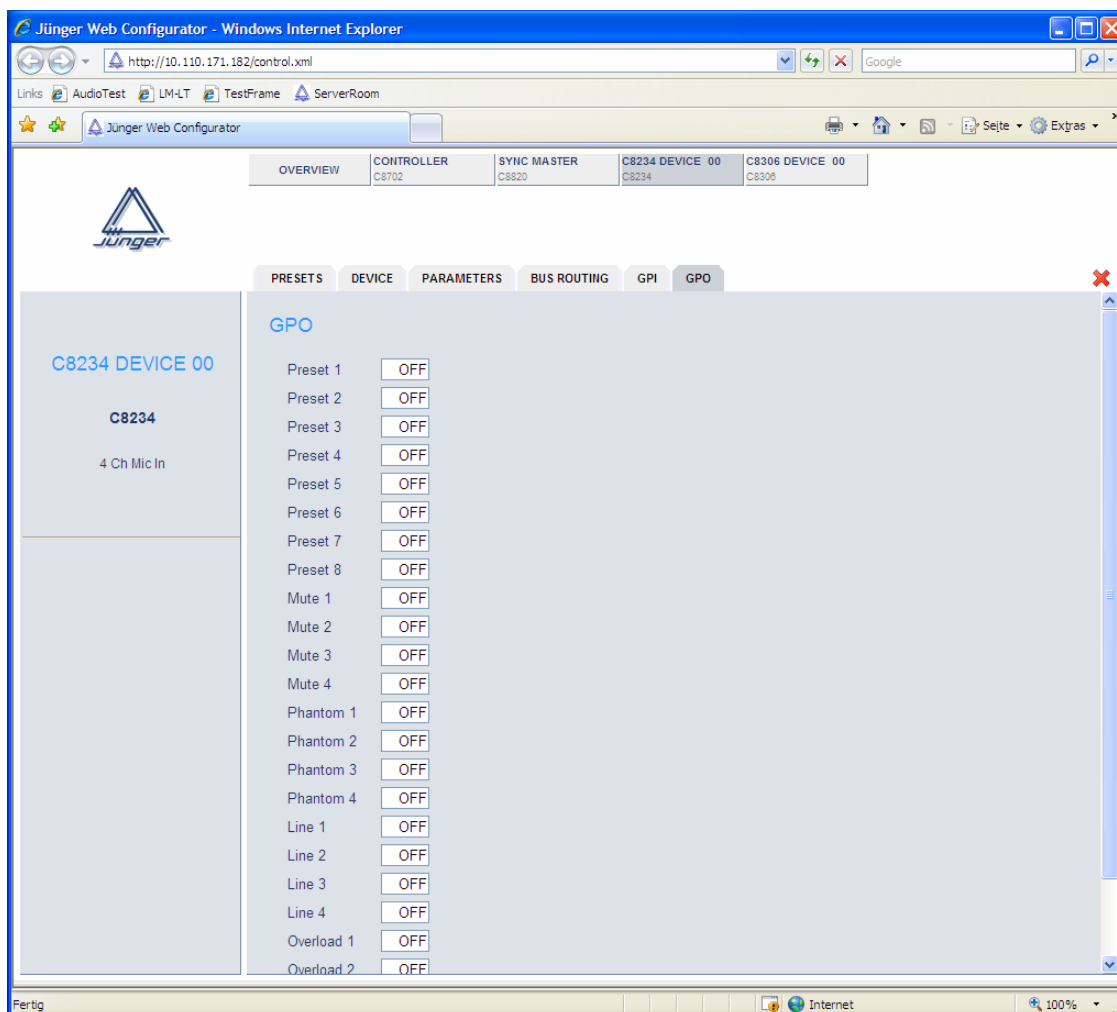


**GPI :** Set up of frame wide GPI numbers to trigger a dedicated module function.  
If a GPI is detected by an GPI/O module C8802 (TTL I/O) or C8807 (opto/relay I/O), it will put an associated number on the CAN bus.  
Each module in a frame is permanently listening for such numbers



Great care must be taken to avoid same numbers assigned to different functions! Because it will activate multiple functions, causing great confusion in bigger installations, e.g. where Jünger HW remote controller is in place or GPIs are connected with automation systems.

**GPO (Tally) :** Set up of frame wide GPO numbers to trigger a dedicated GPO (Tally) of a GPI/O module C8802 (TTL I/O) or C8807 (opto/relay I/O) if the associated function is activated.



Great care must be taken to avoid same numbers assigned to different functions! Because it will fire same GPO (Tally) by different functions, causing great confusion in bigger installations, e.g. where Junger HW remote controller is in place or GPOs are connected with other management systems. There is no mechanism implemented to check for doublets